



H
HERTEX
est. 1987

MAYFLOWER



MAYFLOWER

Mayflower is an elegant collection of understated florals and foliage patterns, which correlate with textured geometrics and plain wallcoverings. All the designs are flame retardant and are composed of vinyl, making them not only highly durable with high lightfastness but also washable and easy to install.





GARDEN CLUB



GARDEN CLUB in *Graphite*



GARDEN CLUB in *Almond*



GARDEN CLUB in *Persimmon*

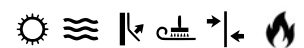


GARDEN CLUB in *Tarragon*



GARDEN CLUB in *Wasabi*

68,58cm x 8,2m. Repeat: 53cm. Vinyl. Off-set match. ASTM E-84 tunnel test.
Class A fire-rated. Dye-lot variations may occur.



H | HERTEX
est. 1987



GARDEN CLUB in Graphite



GARDEN CLUB *in Tarragon*

H | HERTEX

est. 1987



GARDEN CLUB *in Wasabi*



GARDEN CLUB in Graphite

H | HERTEX
EST. 1987



GARDEN CLUB *in Almond*







MARTHA'S VINEYARD



MARTHA'S VINEYARD
in Delt



MARTHA'S VINEYARD
in Almond

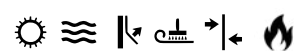


MARTHA'S VINEYARD
in Blush



MARTHA'S VINEYARD
in Apricot

68,58cm x 8,2m. Repeat: 64cm. Vinyl. Off-set match. ASTM E-84 tunnel test.
Class A fire-rated. Dye-lot variations may occur.



H | HERTEX

EST. 1987



MARTHA'S VINEYARD in Blush



MARTHA'S VINEYARD *in Delft*

H | HERTEX

EST. 1987



MARTHA'S VINEYARD in Almond



H | HERTEX
EST. 1987



MARTHA'S VINEYARD *in* Apricot



SHORELINE



SHORELINE *in Natural*



SHORELINE *in Reed*

68,58cm x 8,2m. Repeat: 53cm. Vinyl. Straight match. ASTM E-84 tunnel test.
Class A fire-rated. Dye-lot variations may occur.



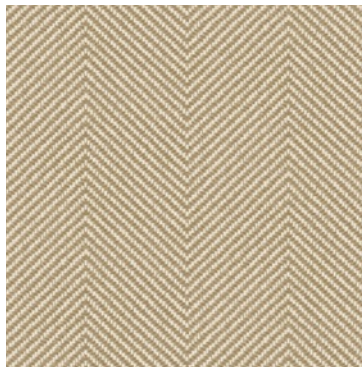




SHORELINE *in Reed*



LIV



LIV in Straw

68,58cm x 8,2m. Repeat: 0cm. Vinyl on non-woven. Random match.
ASTM E-84 tunnel test. Class A Fire-rated. Dye-lot variations may occur.





EAST HAVEN



EAST HAVEN *in Mist*



EAST HAVEN *in Eclipse*

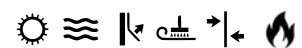


EAST HAVEN *in Coastal*



EAST HAVEN *in Persimmon*

68,58cm x 8,2m. Repeat: 53cm. Vinyl. Off-set match. ASTM E-84 tunnel test.
Class A fire-rated. Dye-lot variations may occur.







EAST HAVEN *in Eclipse*



H | HERTEX
est. 1987

EAST HAVEN *in Mist*



EAST HAVEN *in Coastal*

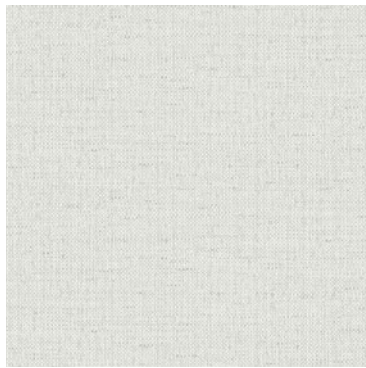


H | HERTEX
est. 1987

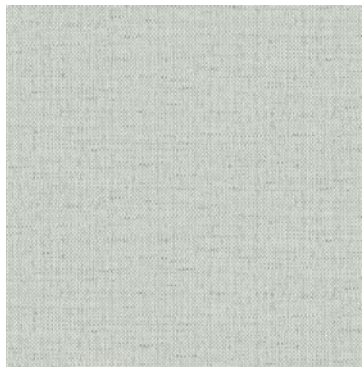
EAST HAVEN *in Persimmon*



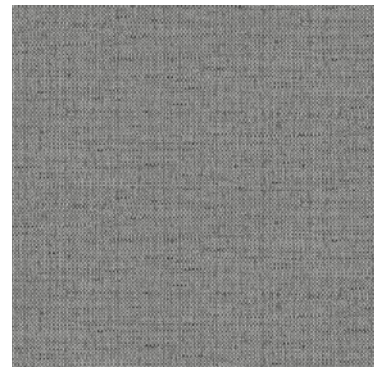
NANTUCKET



NANTUCKET *in Pumice*



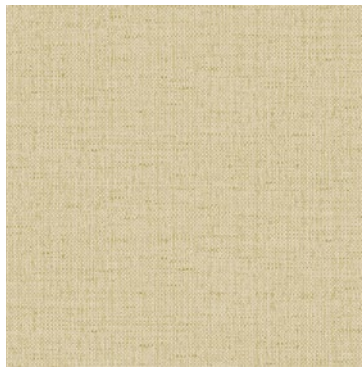
NANTUCKET *in Fog*



NANTUCKET *in Storm*



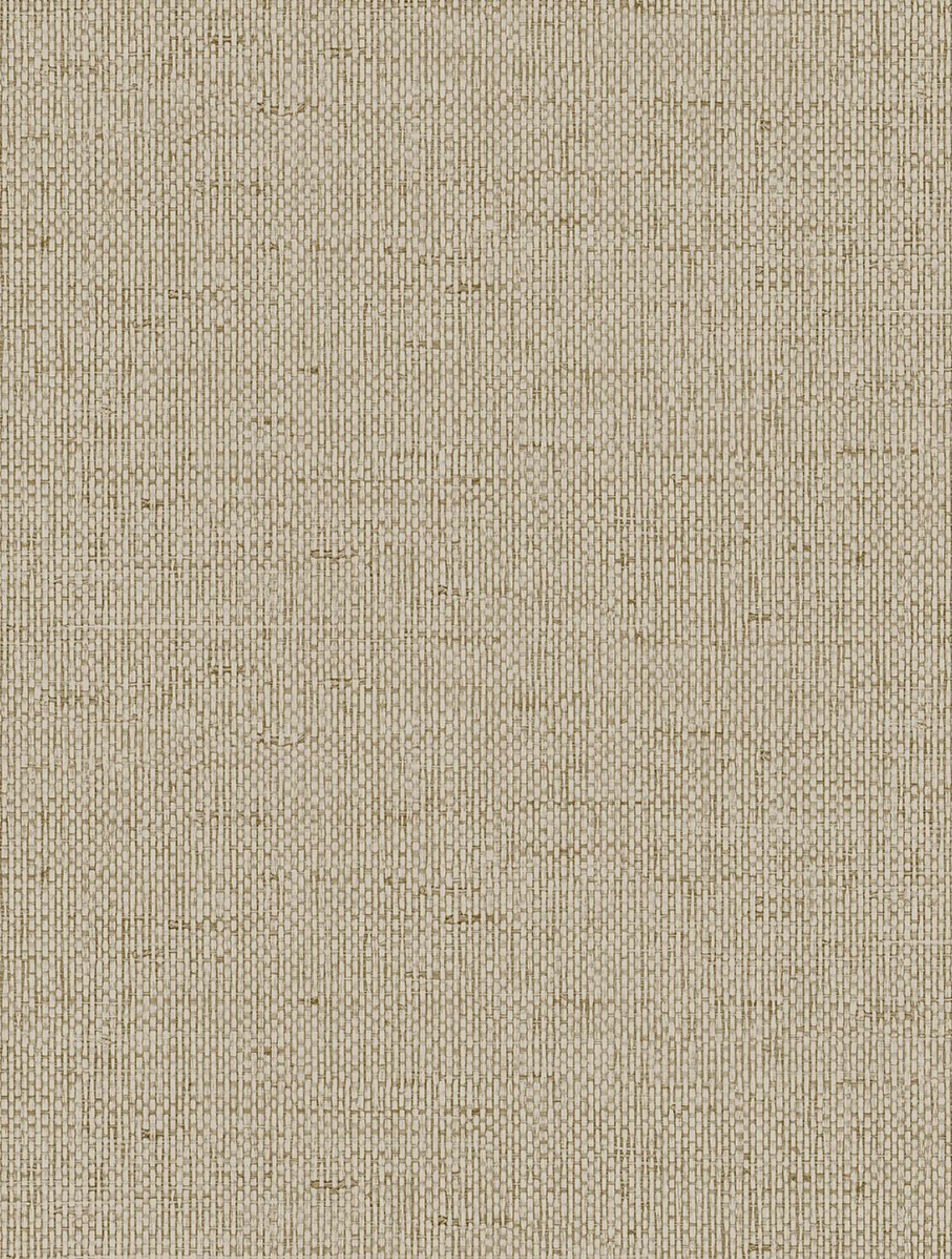
NANTUCKET *in Sandstone*



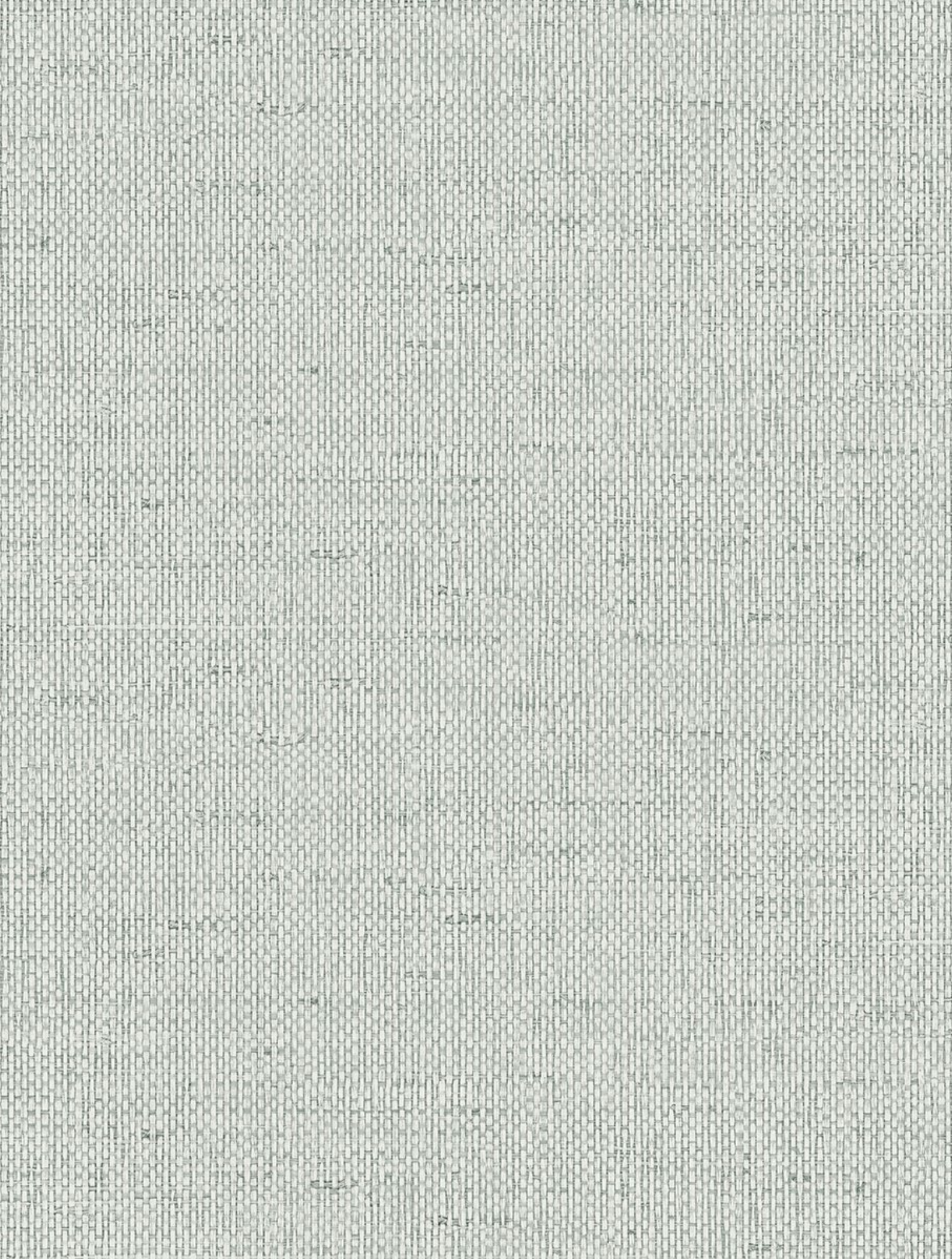
NANTUCKET *in Raffia*

68,58cm x 8,2m. Repeat: 0cm. Vinyl. Random match. ASTM E-84 tunnel test.
Class A fire-rated. Dye-lot variations may occur.





NANTUCKET in Sandstone





ROCKPORT



ROCKPORT *in Pumice*



ROCKPORT *in Flint*

52,07cm x 10m. Repeat: 45,72cm. Non-woven. Straight match.
ASTM E-84 tunnel test. Class A fire-rated. Dye-lot variations may occur.







ROCKPORT *in Flint*



CAPE COD



CAPE COD in *Graphite*



CAPE COD in *Cloud*



CAPE COD in *Regatta*



CAPE COD in *Moonstruck*

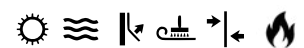


CAPE COD in *Raffia*



CAPE COD in *Misty Jade*

68,58cm x 8,2m. Repeat: 13,25cm. Vinyl. Off-set match. ASTM E-84 tunnel test.
Class A fire-rated. Dye-lot variations may occur.



H | HERTEX
EST. 1987



CAPE COD in Regatta



CAPE COD in Raffia









CAPE COD in Misty Jade





PLYMOUTH



PLYMOUTH *in White Oak*



PLYMOUTH *in Ebony*

68,58cm x 8,2m. Repeat: 53cm. Vinyl. Straight match. ASTM E-84 tunnel test.
Class A fire-rated. Dye-lot variations may occur.







PLYMOUTH *in Ebony*



BRAD



BRAD in *Nougat*



BRAD in *Tofu*

68,58cm x 8,2m. Repeat: 0cm. Vinyl on non-woven. Random match.
ASTM E-84 tunnel test. Class A Fire-rated. Dye-lot variations may occur.





BRAD *in Nougat*



BRAD *in Tofu*

Visit us online at hertex.co.za
and at Hertex showrooms across South Africa.

WESTERN CAPE

BELLVILLE

12 Bella Rosa Street,
Bellville, 7530
tel +27 21 914 3390

CAPE TOWN

187 Upper Buitenkant Street,
Gardens, 8001
tel +27 21 461 7420

GEORGE

85 Meade Street,
George, 6530
tel +27 44 884 1501

SOMERSET WEST

10 Bright Street,
Somerset West, 7130
tel +27 21 852 8152

WYNBERG

1 Carr Hill Road,
Chelsea Village, Wynberg, 7800
tel +27 21 761 7734

EASTERN CAPE

PORT ELIZABETH

45 Prospect Rd,
Walmer, Gqeberha, 6064
tel +27 41 373 2887

GAUTENG

FOURWAYS

82 The Straight Avenue, Pineslopes,
Fourways, Ext 68, 2055
tel +27 10 276 0100

KRAMERVILLE

16 Kramer Road,
Kramerville, 2090
tel +27 11 262 4108

PARKHURST

74 6th Street,
Parkhurst, 2193
tel +27 11 025 8483

PRETORIA

869 Justice Mahomed Street,
Brooklyn, 0011
tel +27 12 346 4331

KWAZULU-NATAL

DURBAN

327 Florida Road,
Morningside, 4001
tel +27 31 312 0632

UMHLANGA

13 Beacon Rock,
21 Lighthouse Road,
Umhlanga, 4320
tel +27 31 561 8505

FREE STATE

BLOEMFONTEIN

11 Brill Street,
Westdene, 9301
tel +27 51 430 2673 / 9800

MPUMALANGA

NELSPRUIT

Unit 2, Lifestyle Centre,
6 Amanzi Street,
Riverside Park, 1226
tel +27 13 757 0556

NAMIBIA

WINDHOEK

Unit 2, City Plaza,
Sam Nujoma Avenue,
Klein Windhoek, 9000
tel +264 61 219 560

**DISTRIBUTION
CENTRES**

MIDRAND

28 De Winnar Street,
Midrand, 1685
tel +27 11 805 3227

STIKLAND

17 Bell Street, Stikland,
Bellville, 7530
tel +27 21 948 4764

**TRADE ORDERS
& ENQUIRIES**

✉ orders@hertex.co.za

☎ 066 462 8674

H | HERTEX